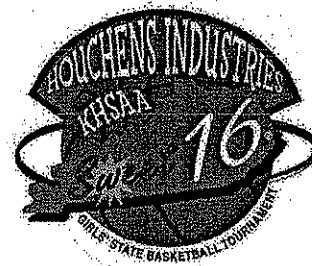


2005



**Houchens Industries/KHSAA
Girls' Sweet 16®
State Basketball Tournament**

**Final Game Stats
Session 1 ~ Game 2
Wednesday, March 23**

**Henderson County Colonels
vs.
Scott County Cardinals**



**March 23-26
Diddle Arena
Bowling Green**

2005 HOUCHENS INDUSTRIES/KHSAA GIRLS' SWEET 16 - Game Box Score

Henderson County Lady Colonels vs. Scott County Lady Cardinals

Date: 03/23/2005 Time: 2:30 pm CST Site: Diddle Arena-Bowling Green, KY Attendance: 5021

Visitors: Scott County Lady Cardinals															
##	Name	P	FG	3 Pt	FT	PTS	ORB	DRB	TR	PF	AST	TO	BS	ST	MIN
00	* Chelsia Lymon		9/14	0/2	3/4	21	1	5	6	1	8	6	0	5	30:57
3	Brillia Garr		0/1	0/0	0/0	0	2	0	2	1	1	0	0	0	7:30
10	Holly Milburn		0/0	0/0	0/0	0	0	2	2	1	0	0	0	0	4:29
11	Jessica Wilson		0/0	0/0	0/0	0	0	0	0	0	0	0	0	0	1:03
14	Regan Grimes		0/1	0/1	0/0	0	0	0	0	0	0	0	0	0	1:03
15	* Rebecca Gray		7/15	2/3	1/2	17	2	2	4	1	1	4	0	0	29:51
20	* Michelle Howard		1/6	1/3	1/2	4	1	3	4	2	1	5	0	2	24:33
22	Samantha Norman		0/1	0/1	0/0	0	0	0	0	0	0	1	0	0	1:03
23	Madison Webb														DNP
32	* Aimee Bruckner		1/2	0/0	0/0	2	2	8	10	3	0	0	1	0	18:07
34	* Suzie Owens		12/16	0/0	2/5	26	5	11	16	2	0	2	3	2	28:54
44	Sarah McLeod		0/0	0/0	0/0	0	0	1	1	1	0	1	0	1	1:03
54	Ausha Weathers		4/10	0/0	1/2	9	2	0	2	4	0	1	0	1	11:27
24	Sarah Wilson														DNP
40	Laura Hoffman														DNP
	Team						0	1	1						
	Totals		34/66	3/10	8/15	79	15	33	48	16	11	20	4	11	160
	Total FG		1st Half		18/35	51.4%	2nd Half	16/31	51.6%	Game	34/66	51.5%			
	3 PT FG		1st Half		2/4	50.0%	2nd Half	1/6	16.7%	Game	3/10	30.0%			
	Free Throws		1st Half		4/6	66.7%	2nd Half	4/9	44.4%	Game	8/15	53.3%			

Home: Henderson County Lady Colonels															
##	Name	P	FG	3 Pt	FT	PTS	ORB	DRB	TR	PF	AST	TO	BS	ST	MIN
10	Allison Todd														DNP
12	* Rinesha Soaper		5/9	0/1	4/5	14	1	2	3	2	2	4	0	2	28:52
14	* Krista Hatfield		5/8	4/7	0/0	14	0	4	4	0	1	3	0	0	30:57
15	* Sierra Gilbert		2/8	0/0	2/4	6	1	0	1	3	2	2	0	0	30:57
20	Aurelia Quarles		1/1	0/0	0/0	2	0	0	0	0	0	1	0	1	2:58
22	* Ashley Hawkins		8/20	0/0	2/5	18	0	3	3	2	5	1	1	4	30:57
23	Sara Scales		0/0	0/0	0/0	0	0	0	0	0	0	0	0	0	1:01
24	Tara McConnell		0/0	0/0	0/0	0	0	0	0	0	0	0	0	0	5:45
25	Katelyn Fulcher														DNP
30	Whitney Bingemer		0/0	0/0	0/2	0	0	0	0	0	0	0	0	0	1:03
31	Destani Kitchens														DNP
33	Aubri Klutey		0/0	0/0	0/0	0	0	1	1	0	0	2	0	0	1:03
44	* Whitney Waddell		4/11	0/0	2/4	10	2	7	9	4	2	3	3	1	26:27
54	Moriah Hobgood														DNP
	Team						1	3	4			1			
	Totals		25/57	4/8	10/20	64	5	20	25	11	12	17	4	8	160
	Total FG		1st Half		11/32	34.4%	2nd Half	14/25	56.0%	Game	25/57	43.9%			
	3 PT FG		1st Half		3/5	60.0%	2nd Half	1/3	33.3%	Game	4/8	50.0%			
	Free Throws		1st Half		1/4	25.0%	2nd Half	9/16	56.3%	Game	10/20	50.0%			

	SCOTT		HEND		SCOTT		HEND		SCOTT		HEND	
Free Throw Pts	8	10	3Pt Points	9	12	Pts/Possession	1.01	0.82				
Pts off Turnovers	19	14	2nd Chance Points	14	0	Pts off Bench	9	2				
Total Rebounds	48	25	Team Rebounds	1	4	Dead Ball Reb	3	5				
Off Rebound %	42.9	13.2	Def Rebound %	86.8	57.1	Total Rebound %	65.8	34.2				
Technical Fouls	SCOTT		None		HEND		None					
Officials	Michael Ashurst, Brian Cook, Ron Price											

	Qtr 1	Qtr 2	Qtr 3	Qtr 4	OT 1	OT 2	OT 3	OT 4	Total
Scott County Lady Cardinals	24	18	22	15	0	0	0	0	79
Henderson County Lady Colonels	18	8	21	17	0	0	0	0	64

2005 HOUCHENS INDUSTIRES/KHSAA GIRLS' SWEET 16 - Play by Play Report - Period: 1 (pg 1)

Henderson County Lady Colonels vs. Scott County Lady Cardinals

Date: 03/23/2005 Time: 2:30 pm CST Site: Diddle Arena-Bowling Green, KY Attendance:

Name	Action	Action	Score	Clock	Diff	Name	Action	Action
44 W Waddell	Start Game					00 C Lymon	Start Game	
12 R Soaper	Start Game					15 R Gray	Start Game	
14 K Hatfield	Start Game					20 M Howard	Start Game	
15 S Gilbert	Start Game					32 A Bruckner	Start Game	
22 A Hawkins	Start Game					34 S Owens	Start Game	
W Waddell	Jump Ball Loss			1 7:57		S Owens	Jump Ball Win	
W Waddell	Block	A Hawkins Def Reb		1 7:51		S Owens	FG Attempt	
A Hawkins	Layup Att			1 7:44		A Bruckner	Def Rebound	
HEND	Def Rebound			1 7:33		C Lymon	FG Attempt	
W Waddell	FG Made	R Soaper Assist	2-0	1 7:23	+2			
				1 7:09		M Howard	Turnover	
W Waddell	Steal			1 7:07				
R Soaper	Layup Made	A Hawkins Assist	4-0	1 7:00	+4			
				1 6:59		SCOTT	Partial Time Out	
			4-2	1 6:44	+2	C Lymon	FG Made	
K Hatfield	Turnover			1 6:28				
				1 6:27		C Lymon	Steal	
			4-4	1 6:26	(T1)	C Lymon	Layup Made	
R Soaper	Turnover	(Bad Pass)		1 6:17				
				1 6:16		C Lymon	Steal	
			4-6	1 6:15	-2 (L1)	C Lymon	FG Made	
A Hawkins	Layup Made		6-6	1 6:04	(T2)			
				1 5:48		R Gray	Layup Att	S Owens Off Reb
K Hatfield	Def Rebound			1 5:44		S Owens	FG Attempt	
S Gilbert	FG Made		8-6	1 5:33	+2 (L2)			
				1 5:22		C Lymon	Turnover	
S Gilbert	Layup Att			1 5:17		C Lymon	Def Rebound	
			8-8	1 5:11	(T3)	C Lymon	Layup Made	
W Waddell	Layup Att			1 5:03		A Bruckner	Def Rebound	
W Waddell	Personal Foul			1 4:56				
				1 4:56		A Weathers	Enter Game	for A Bruckner
				1 4:56		M Howard	FT Attempt	SCOTT Deadball Reb
			8-9	1 4:56	-1 (L3)	M Howard	FT Made	
				1 4:56		B Garr	Enter Game	for M Howard
W Waddell	FG Attempt			1 4:49		S Owens	Def Rebound	
				1 4:41		A Weathers	FG Attempt	S Owens Off Reb
			8-11	1 4:38	-3	S Owens	Putback Made	
W Waddell	Turnover			1 4:31				
				1 4:30		A Weathers	Steal	
W Waddell	Personal Foul			1 4:30				
A Quarles	Enter Game	for W Waddell		1 4:30				
				1 4:30		A Weathers	FT Attempt	SCOTT Deadball Reb
			8-12	1 4:30	-4	A Weathers	FT Made	
K Hatfield	3Pt Made	S Gilbert Assist	11-12	1 4:22	-1			
				1 4:10		R Gray	Turnover	
R Soaper	Steal			1 4:10				
				1 4:10		M Howard	Enter Game	for R Gray
K Hatfield	Def Rebound			1 4:00		M Howard	3Pt Attempt	
K Hatfield	Turnover	(Bad Pass)		1 3:56				
				1 3:55		M Howard	Steal	
				1 3:53		M Howard	Turnover	(Bad Pass)
A Hawkins	Steal			1 3:52				
R Soaper	Turnover			1 3:48				
				1 3:47		C Lymon	Steal	
				1 3:46		C Lymon	Turnover	(Fumble)
A Hawkins	FG Attempt			1 3:42		S Owens	Def Rebound	
				1 3:32		A Weathers	FG Attempt	S Owens Off Reb
			11-14	1 3:30	-3	S Owens	Putback Made	
A Quarles	Turnover	(Bad Pass)		1 3:13				
				1 3:12		S Owens	Steal	
			11-16	1 3:10	-5	S Owens	Layup Made	

2005 HOUCHEMENS INDUSTIRES/KHSAA GIRLS' SWEET 16 - Play by Play Report - Period: 1 (pg 2)

Henderson County Lady Colonels vs. Scott County Lady Cardinals

Date: 03/23/2005 Time: 2:30 pm CST Site: Diddle Arena-Bowling Green, KY Attendance:

Name	Action	Action	Score	Clock	Diff	Name	Action	Action	
HEND	Partial Time Out			1 3:04					
A Hawkins	FG Attempt			1 3:04		R Gray	Enter Game	for M Howard	
				1 2:39		C Lymon	Def Rebound		
				1 2:36		C Lymon	Turnover	(Bad Pass)	
	Official Time Out			1 2:35			Official Time Out		
T McConnell	Enter Game	for A Quarles		1 2:35					
K Hatfield	3Pt Made	A Hawkins Assist	14-16	1 2:27	-2				
				1 2:18		R Gray	FG Attempt	S Owens Off Reb	
				1 2:15		S Owens	Putback Att	B Garr Off Reb	
				1 2:12		B Garr	Putback Att	S Owens Off Reb	
			14-18	1 2:10	-4	S Owens	Putback Made		
				1 1:58		C Lymon	Personal Foul		
S Gilbert	Turnover	(Fumble)		1 1:49					
				1 1:46		C Lymon	Steal		
			14-20	1 1:45	-6	A Weathers	Layup Made	C Lymon Assist	
A Hawkins	FG Attempt			1 1:29		S Owens	Def Rebound		
				14-22	1 1:18	-8	A Weathers	Layup Made	B Garr Assist
R Soaper	Layup Made		16-22	1 1:00	-6				
A Hawkins	Block	A Hawkins Def Reb		1 0:49		A Weathers	FG Attempt		
S Gilbert	Layup Made		18-22	1 0:43	-4				
				1 0:20		R Gray	FG Attempt	B Garr Off Reb	
			18-24	1 0:03	-6	C Lymon	FG Made		

End of Period Summary Lady Colonels 18 Lady Cardinals 24

Largest Lead: Lady Colonels 14 Lady Cardinals 22 (8 pts)
 Lead in Period: Lady Colonels 14 Lady Cardinals 22 (8 pts)
 7 for 9 oppo pts
 0 for 0 pts
 8/15 for 53.3 %
 0/0 for 0.00 %

Turnovers
 2nd Chances
 Field Goals
 Free Throws

Lead Changes: 3 Ties: 3
 Lead Changes: 3 Ties: 3 (this period)
 6 for 5 oppo pts
 7 for 8 pts
 11/23 for 47.8 %
 2/4 for 50.0 %

2005 HOUCHENS INDUSTIRES/KHSAA GIRLS' SWEET 16 - Play by Play Report - Period: 2 (pg 1)

Henderson County Lady Colonels vs. Scott County Lady Cardinals

Date: 03/23/2005 Time: 2:30 pm CST Site: Diddle Arena-Bowling Green, KY Attendance:

Name	Action	Action	Score	Clock	Diff	Name	Action	Action
W Waddell	Enter Game	for T McConnell		2 8:00				
				2 8:00		S Owens	Leave Game	
				2 8:00		A Bruckner	Enter Game	for A Weathers
				2 8:00		M Howard	Enter game	for B Garr
				2 8:00		A Weathers	Enter game	
A Hawkins	Layup Att		18-26	2 7:49	-8	A Bruckner	Def Rebound	
				2 7:43		R Gray	Layup Made	
K Hatfield	3Pt Attempt	W Waddell Off Reb		2 7:33				
K Hatfield	Turnover	(Bad Pass)		2 7:26				
HEND	Turnover			2 7:24		M Howard	Steal	
W Waddell	Def Rebound			2 7:12		C Lymon	FG Attempt	
A Hawkins	Layup Att			2 7:06		A Bruckner	Def Rebound	
				2 6:57		M Howard	Layup Att	A Bruckner Off Reb
W Waddell	Def Rebound			2 6:54		A Bruckner	Putback Att	
				2 6:53		A Weathers	Personal Foul	
				2 6:53		S Owens	Enter Game	for A Weathers
A Hawkins	FG Attempt	W Waddell Off Reb		2 6:36				
W Waddell	FG Attempt			2 6:33		A Bruckner	Block	M Howard Def Reb
				2 6:29		M Howard	Turnover	(Bad Pass)
R Soaper	3Pt Attempt			2 6:01		A Bruckner	Def Rebound	
R Soaper	Personal Foul		18-27	2 5:58	-9	S Owens	FT Made	
			18-28	2 5:58	-10	S Owens	FT Made	
W Waddell	Turnover	(Bad Pass)		2 5:43				
HEND	Time Out			2 5:43				
				2 5:37	-12	R Gray	FG Made	
A Hawkins	Layup Att			2 5:27		S Owens	Block	M Howard Def Reb
				2 5:22		M Howard	Turnover	
A Hawkins	Steal			2 5:21				
A Hawkins	FG Attempt			2 5:18		SCOTT	Def Rebound	
			18-33	2 5:05	-15	R Gray	3Pt Made	C Lymon Assist
R Soaper	FG Attempt	R Soaper Off Reb		2 4:50		S Owens	Block	
R Soaper	Putback Att			2 4:47		C Lymon	Def Rebound	
				2 4:39		C Lymon	Turnover	(Fumble)
A Hawkins	Layup Att			2 4:35		R Gray	Def Rebound	
HEND	Def Rebound			2 4:28		C Lymon	3Pt Attempt	
				2 4:26		A Weathers	Enter Game	for A Bruckner
W Waddell	FG Made	K Hatfield Assist	20-33	2 4:11	-13			
W Waddell	Def Rebound			2 4:01		R Gray	FG Attempt	
K Hatfield	3Pt Made	A Hawkins Assist	23-33	2 3:52	-10			
			23-35	2 3:34	-12	S Owens	Layup Made	M Howard Assist
				2 3:26		A Weathers	Personal Foul	
				2 3:26		H Milburn	Enter Game	for A Weathers
W Waddell	FT Made		24-35	2 3:26	-11			
W Waddell	FT Attempt			2 3:26		S Owens	Def Rebound	
				2 3:10		R Gray	Turnover	
S Gilbert	Turnover			2 3:02				
				2 3:02		C Lymon	Steal	
				2 2:58		C Lymon	Turnover	(Bad Pass)
				2 2:42		H Milburn	Personal Foul	
	Official Time Out			2 2:42			Official Time Out	
W Waddell	FG Attempt			2 2:40		M Howard	Def Rebound	
			24-37	2 2:31	-13	R Gray	FG Made	
S Gilbert	FG Attempt			2 2:18		H Milburn	Def Rebound	
			24-40	2 2:08	-16	R Gray	3Pt Made	C Lymon Assist
				2 2:07		B Garr	Enter Game	for M Howard
T McConnell	Enter Game	for R Soaper		2 2:07				
A Hawkins	FG Made	W Waddell Assist	26-40	2 1:43	-14			
			26-42	2 1:03	-16	S Owens	FG Made	
				2 0:52		B Garr	Personal Foul	
				2 0:52		M Howard	Enter Game	for B Garr
A Hawkins	FT Attempt	HEND Deadball Reb		2 0:52				

2005 HOUCHENS INDUSTIRES/KHSAA GIRLS' SWEET 16 - Play by Play Report - Period: 2 (pg 2)

Henderson County Lady Colonels vs. Scott County Lady Cardinals

Date: 03/23/2005 Time: 2:30 pm CST Site: Diddle Arena-Bowling Green, KY Attendance:

Name	Action	Action	Score	Clock	Diff	Name	Action	Action
A Hawkins	FT Attempt			2 0:52		H Milburn	Def Rebound	
				2 0:09		C Lymon	Turnover	
A Hawkins	Steal			2 0:09				
A Hawkins	FG Attempt			2 0:02		S Owens	Def Rebound	

End of Period Summary Lady Colonels 26 Lady Cardinals 42

Largest Lead: Lady Colonels 24 Lady Cardinals 40 (16 pts)

Lead in Period: Lady Colonels 24 Lady Cardinals 40 (16 pts)

4 for 2 oppo pts

3 for 0 pts

3/17 for 17.6 %

1/4 for 25.0 %

Turnovers
2nd Chances
Field Goals
Free Throws

Lead Changes: 3 Ties: 3

Lead Changes: 0 Ties: 0 (this period)

6 for 0 oppo pts

1 for 0 pts

7/12 for 58.3 %

2/2 for 100 %

2005 HOUCHEMS INDUSTRIES/KHSAA GIRLS' SWEET 16 - Game Box Score

Henderson County Lady Colonels vs. Scott County Lady Cardinals

Date: 03/23/2005 Time: 2:30 pm CST Site: Diddle Arena-Bowling Green, KY Attendance:

Visitors: Scott County Lady Cardinals															
##	Name	P	FG	3 Pt	FT	PTS	ORB	DRB	TR	PF	AST	TO	BS	ST	MIN
00	* Chelsia Lymon		5/8	0/1	0/0	10	0	3	3	1	3	6	0	5	16:00
3	Brillia Garr		0/1	0/0	0/0	0	2	0	2	1	1	0	0	0	6:11
10	Holly Milburn		0/0	0/0	0/0	0	0	2	2	1	0	0	0	0	3:26
11	Jessica Wilson														DNP
14	Regan Grimes														DNP
15	* Rebecca Gray		5/9	2/2	0/0	12	0	1	1	0	0	2	0	0	14:54
20	* Michelle Howard		0/2	0/1	1/2	1	0	3	3	0	1	4	0	2	10:55
22	Samantha Norman														DNP
23	Madison Webb														DNP
32	* Aimee Bruckner		0/1	0/0	0/0	0	1	5	6	0	0	0	1	0	6:38
34	* Suzie Owens		6/9	0/0	2/2	14	5	5	10	0	0	0	2	1	14:53
44	Sarah McLeod														DNP
54	Ausha Weathers		2/5	0/0	1/2	5	0	0	0	2	0	0	0	1	7:03
24	Sarah Wilson														DNP
40	Laura Hoffman														DNP
	Team						0	1	1						
	Totals		18/35	2/4	4/6	42	8	20	28	5	5	12	3	9	80
	Total FG		1st Half		18/35	51.4%	2nd Half	0/0	0.00%	Game	18/35	51.4%			
	3 PT FG		1st Half		2/4	50.0%	2nd Half	0/0	0.00%	Game	2/4	50.0%			
	Free Throws		1st Half		4/6	66.7%	2nd Half	0/0	0.00%	Game	4/6	66.7%			

Home: Henderson County Lady Colonels															
##	Name	P	FG	3 Pt	FT	PTS	ORB	DRB	TR	PF	AST	TO	BS	ST	MIN
10	Allison Todd														DNP
12	* Rinesha Soaper		2/5	0/1	0/0	4	1	0	1	1	1	2	0	1	13:53
14	* Krista Hatfield		3/4	3/4	0/0	9	0	2	2	0	1	3	0	0	16:00
15	* Sierra Gilbert		2/4	0/0	0/0	4	0	0	0	0	1	2	0	0	16:00
20	Aurelia Quarles		0/0	0/0	0/0	0	0	0	0	0	0	1	0	0	1:55
22	* Ashley Hawkins		2/13	0/0	0/2	4	0	2	2	0	3	0	1	3	16:00
23	Sara Scales														DNP
24	Tara McConnell		0/0	0/0	0/0	0	0	0	0	0	0	0	0	0	4:42
25	Katelyn Fulcher														DNP
30	Whitney Bingemer														DNP
31	Destani Kitchens														DNP
33	Aubri Klutey														DNP
44	* Whitney Waddell		2/6	0/0	1/2	5	2	3	5	2	1	2	1	1	11:30
54	Moriah Hobgood														DNP
	Team						0	2	2			1			
	Totals		11/32	3/5	1/4	26	3	9	12	3	7	11	2	5	80
	Total FG		1st Half		11/32	34.4%	2nd Half	0/0	0.00%	Game	11/32	34.4%			
	3 PT FG		1st Half		3/5	60.0%	2nd Half	0/0	0.00%	Game	3/5	60.0%			
	Free Throws		1st Half		1/4	25.0%	2nd Half	0/0	0.00%	Game	1/4	25.0%			

	SCOTT		HEND		SCOTT		HEND		SCOTT		HEND	
Free Throw Pts	4	1	3Pt Points	6	9	Pts/Possession	1.00	0.62				
Pts off Turnovers	11	5	2nd Chance Points	8	0	Pts off Bench	5	0				
Total Rebounds	28	12	Team Rebounds	1	2	Dead Ball Reb	2	1				
Off Rebound %	47.1	13.0	Def Rebound %	87.0	52.9	Total Rebound %	70.0	30.0				
Technical Fouls	SCOTT		None		SCOTT		None		SCOTT		None	
	HEND		None		HEND		None		HEND		None	
Officials	Michael Ashurst, Brian Cook, Ron Price											

	Qtr 1	Qtr 2	Qtr 3	Qtr 4	OT 1	OT 2	OT 3	OT 4	Total
Scott County Lady Cardinals	24	18	0	0	0	0	0	0	42
Henderson County Lady Colonels	18	8	0	0	0	0	0	0	26

2005 HOUCHENS INDUSTRIES/KHSAA GIRLS' SWEET 16 - Play by Play Report - Period: 3 (pg 1)
Henderson County Lady Colonels vs. Scott County Lady Cardinals
Date: 03/23/2005 Time: 2:30 pm CST Site: Diddle Arena-Bowling Green, KY Attendance: 5021

Name	Action	Action	Score	Clock	Diff	Name	Action	Action
				3 8:00		C Lymon	Leave Game	
				3 8:00		H Milburn	Leave Game	
				3 8:00		R Gray	Leave Game	
				3 8:00		M Howard	Leave Game	
				3 8:00		C Lymon	Enter Game	for S Owens
				3 8:00		R Gray	Enter game	
				3 8:00		M Howard	Enter game	
				3 8:00		A Bruckner	Enter game	
				3 8:00		S Owens	Enter game	
K Hatfield	Leave Game			3 8:00				
S Gilbert	Leave Game			3 8:00				
A Hawkins	Leave Game			3 8:00				
T McConnell	Leave Game			3 8:00				
R Soaper	Enter Game	for W Waddell		3 8:00				
K Hatfield	Enter game			3 8:00				
S Gilbert	Enter game			3 8:00				
A Hawkins	Enter game			3 8:00				
W Waddell	Enter game			3 8:00				
W Waddell	Block	A Hawkins Def Reb		3 7:46		S Owens	FG Attempt	
K Hatfield	3Pt Attempt			3 7:24		C Lymon	Def Rebound	
			26-44	3 7:13	-18	R Gray	FG Made	
R Soaper	FG Attempt			3 6:55		S Owens	Block	S Owens Def Reb
				3 6:50		R Gray	Turnover	(Traveling)
A Hawkins	FG Made	W Waddell Assist	28-44	3 6:40	-16			
			28-46	3 6:31	-18	S Owens	Layup Made	
A Hawkins	FT Made		29-46	3 6:23	-17	M Howard	Personal Foul	
A Hawkins	FT Made		30-46	3 6:23	-16			
			30-48	3 6:16	-18	A Bruckner	Layup Made	C Lymon Assist
W Waddell	FG Attempt			3 6:05		S Owens	Def Rebound	
			30-51	3 5:56	-21	M Howard	3Pt Made	C Lymon Assist
HEND	Time Out			3 5:48				
A Hawkins	Layup Made		32-51	3 5:33	-19			
A Hawkins	Personal Foul			3 5:23				
				3 5:23		S Owens	FT Attempt	SCOTT Deadball Reb
W Waddell	Def Rebound			3 5:23		S Owens	FT Attempt	
S Gilbert	FG Attempt	HEND Off Reb		3 5:12				
R Soaper	FG Made	A Hawkins Assist	34-51	3 5:06	-17			
S Gilbert	Personal Foul			3 4:59				
			34-52	3 4:59		B Garr	Enter Game	for M Howard
				3 4:59	-18	C Lymon	FT Made	
R Soaper	Def Rebound			3 4:59		C Lymon	FT Attempt	
				3 4:52		S Owens	Personal Foul	
				3 4:52		S Owens	Personal Foul	
				3 4:52		A Weathers	Enter Game	for A Bruckner
S Gilbert	FT Attempt	HEND Deadball Reb		3 4:52				
S Gilbert	FT Made		35-52	3 4:52	-17			
R Soaper	Def Rebound			3 4:35		A Weathers	FG Attempt	
W Waddell	Turnover	(Bad Pass)		3 4:23				
				3 4:17		R Gray	3Pt Attempt	A Weathers Off Reb
			35-54	3 4:15	-19	A Weathers	Putback Made	
A Hawkins	FG Made		37-54	3 4:00	-17			
			37-56	3 3:49	-19	A Weathers	FG Made	
				3 3:40		R Gray	Personal Foul	
				3 3:40		M Howard	Enter Game	for B Garr
K Hatfield	3Pt Made	R Soaper Assist	40-56	3 3:33	-16			
			40-58	3 3:19	-18	S Owens	FG Made	
A Hawkins	FG Made		42-58	3 3:09	-16			
				3 3:09		M Howard	Personal Foul	
A Hawkins	FT Attempt			3 3:09		S Owens	Def Rebound	
				3 3:04		S Owens	Turnover	
R Soaper	Steal			3 3:03				

2005 HOUCHEMS INDUSTRIES/KHSAA GIRLS' SWEET 16 - Play by Play Report - Period: 3 (pg 2)
 Henderson County Lady Colonels vs. Scott County Lady Cardinals
 Date: 03/23/2005 Time: 2:30 pm CST Site: Diddle Arena-Bowling Green, KY Attendance: 5021

Name	Action	Action	Score	Clock	Diff	Name	Action	Action
R Soaper	FG Made		44-58	3 3:02	-14			
W Waddell	Def Rebound			3 2:55		C Lymon	FG Attempt	
K Hatfield	3Pt Attempt			3 2:49		R Gray	Def Rebound	
	Official Time Out			3 2:47			Official Time Out	
			44-60	3 2:41	-16	C Lymon	FG Made	
R Soaper	Offensive Foul			3 2:31				
R Soaper	Turnover			3 2:16		R Gray	FG Attempt	M Howard Off Reb
W Waddell	Def Rebound			3 2:13		M Howard	Putback Att	
K Hatfield	Layup Made	A Hawkins Assist	46-60	3 2:06	-14			
				3 1:59		A Weathers	Turnover	(Traveling)
				3 1:50		A Weathers	Personal Foul	
				3 1:50		A Bruckner	Enter Game	for A Weathers
W Waddell	FT Made		47-60	3 1:50	-13			
W Waddell	FT Attempt			3 1:50		A Bruckner	Def Rebound	
			47-62	3 1:29	-15	C Lymon	Layup Made	R Gray Assist
S Gilbert	FG Attempt			3 1:12		S Owens	Def Rebound	
				3 0:40		M Howard	3Pt Attempt	A Bruckner Off Reb
			47-64	3 0:25	-17	R Gray	FG Made	
A Hawkins	FG Attempt			3 0:05		A Bruckner	Def Rebound	

End of Period Summary Lady Colonels 47 Lady Cardinals 64

Largest Lead: Lady Colonels 30 Lady Cardinals 51 (21 pts)
 Lead in Period: Lady Colonels 30 Lady Cardinals 51 (21 pts)
 2 for 2 oppo pts
 1 for 0 pts
 8/15 for 53.3 %
 4/7 for 57.1 %

Turnovers
 2nd Chances
 Field Goals
 Free Throws

Lead Changes: 3 Ties: 3
 Lead Changes: 0 Ties: 0 (this period)
 3 for 5 oppo pts
 3 for 4 pts
 10/17 for 58.8 %
 1/4 for 25.0 %

2005 HOUCHEMENS INDUSTRIES/KHSAA GIRLS' SWEET 16 - Play by Play Report - Period: 4 (pg 1)

Henderson County Lady Colonels vs. Scott County Lady Cardinals

Date: 03/23/2005 Time: 2:30 pm CST Site: Diddle Arena-Bowling Green, KY Attendance: 5021

Name	Action	Action	Score	Clock	Diff	Name	Action	Action
W Waddell	FG Attempt			4 7:42		S Owens	Def Rebound	
W Waddell	Personal Foul			4 7:22				
				4 7:12		R Gray	FG Attempt	R Gray Off Reb
HEND	Def Rebound	(Dead Ball Reb)		4 7:09		R Gray	Putback Att	
				4 7:09		A Bruckner	Personal Foul	
				4 6:54		S Owens	Personal Foul	
				4 6:54		A Weathers	Enter Game	for S Owens
R Soaper	FG Made		49-64	4 6:54	-15			
R Soaper	FT Made		50-64	4 6:54	-14			
			50-66	4 6:51	-16	C Lymon	FG Made	
W Waddell	FG Attempt			4 6:43		C Lymon	Def Rebound	
W Waddell	Personal Foul		50-67	4 6:27	-17	R Gray	FT Made	
K Hatfield	Def Rebound			4 6:27		R Gray	FT Attempt	
S Gilbert	FG Attempt	S Gilbert Off Reb		4 6:20				
S Gilbert	Putback Att			4 6:18		A Bruckner	Def Rebound	
K Hatfield	Def Rebound			4 6:08		A Weathers	FG Attempt	
				4 5:58		A Weathers	Personal Foul	
				4 5:58		S Owens	Enter Game	for A Weathers
R Soaper	FT Made		51-67	4 5:58	-16			
R Soaper	FT Attempt			4 5:58		S Owens	Def Rebound	
W Waddell	Def Rebound			4 5:48		M Howard	FG Attempt	
A Hawkins	Layup Made		53-67	4 5:38	-14			
			53-69	4 5:17	-16	S Owens	FG Made	C Lymon Assist
W Waddell	FG Made	S Gilbert Assist	55-69	4 4:58	-14			
				4 4:36		C Lymon	3Pt Attempt	R Gray Off Reb
				4 4:31		S Owens	Turnover	(Traveling)
HEND	Partial Time Out			4 4:31				
A Hawkins	FG Made		57-69	4 4:27	-12			
			57-71	4 4:15	-14	S Owens	FG Made	C Lymon Assist
				4 3:46		A Bruckner	Personal Foul	
S Gilbert	FT Attempt	HEND Deadball Reb		4 3:46				
S Gilbert	FT Made		58-71	4 3:46	-13			
				4 3:30		M Howard	Turnover	
A Hawkins	Steal			4 3:29				
R Soaper	Turnover	(Fumble)		4 3:25				
			58-73	4 3:16	-15	C Lymon	Layup Made	
				4 3:00				
				4 2:55		A Bruckner	Personal Foul	
	Official Time Out			4 2:55			Official Time Out	
R Soaper	FT Made		59-73	4 2:55	-14			
R Soaper	FT Made		60-73	4 2:55	-13			
			60-75	4 2:41	-15	S Owens	FG Made	C Lymon Assist
W Waddell	FG Made		62-75	4 2:29	-13			
A Hawkins	Personal Foul			4 1:56				
				4 1:43		R Gray	Turnover	(Fumble)
A Hawkins	Turnover			4 1:29				
				4 1:29		S Owens	Steal	
				4 1:29		A Weathers	Enter Game	for A Bruckner
			62-77	4 1:13	-15	S Owens	FG Made	
S Gilbert	Personal Foul			4 1:13				
				4 1:13		S Owens	FT Attempt	A Weathers Off Reb
W Waddell	Block			4 1:09		A Weathers	FG Attempt	C Lymon Off Reb
S Gilbert	Personal Foul			4 1:03				
K Hatfield	Leave Game			4 1:03				
S Gilbert	Leave Game			4 1:03				
A Hawkins	Leave Game			4 1:03				
A Quarles	Enter Game	for W Waddell		4 1:03				
T McConnell	Enter game			4 1:03				
W Bingemer	Enter game			4 1:03				
A Klutey	Enter game			4 1:03				
				4 1:03		M Howard	Leave Game	

2005 HOUCHEMENS INDUSTIRES/KHSAA GIRLS' SWEET 16 - Play by Play Report - Period: 4 (pg 2)
 Henderson County Lady Colonels vs. Scott County Lady Cardinals
 Date: 03/23/2005 Time: 2:30 pm CST Site: Diddle Arena-Bowling Green, KY Attendance: 5021

Name	Action	Action	Score	Clock	Diff	Name	Action	Action
				4 1:03		S Owens	Leave Game	
				4 1:03		H Milburn	Enter Game	for A Weathers
				4 1:03		R Grimes	Enter game	
				4 1:03		S Norman	Enter game	
			62-78	4 1:03	-16	C Lymon	FT Made	
			62-79	4 1:03	-17	C Lymon	FT Made	
				4 1:03		J Wilson	Enter Game	for C Lymon
				4 1:03		S McLeod	Enter Game	for R Gray
A Klutey	Turnover			4 1:01				
S Scales	Enter Game	for R Soaper		4 1:01				
HEND	Def Rebound			4 0:54		R Grimes	3Pt Attempt	
				4 0:44		S McLeod	Personal Foul	
W Bingemer	FT Attempt	HEND Deadball Reb		4 0:44				
W Bingemer	FT Attempt			4 0:44		S McLeod	Def Rebound	
				4 0:38		S McLeod	Turnover	(Bad Pass)
A Quarles	Steal			4 0:36				
A Quarles	Layup Made		64-79	4 0:35	-15			
A Klutey	Def Rebound			4 0:13		S Norman	3Pt Attempt	
A Klutey	Turnover	(Bad Pass)		4 0:04				
				4 0:04		S McLeod	Steal	
				4 0:01		S Norman	Turnover	

End of Period Summary Lady Colonels 64 Lady Cardinals 79

Largest Lead: Lady Colonels 30 Lady Cardinals 51 (21 pts)

Lead in Period: Lady Colonels 47 Lady Cardinals 64 (17 pts)

4 for 6 oppo pts

1 for 0 pts

6/10 for 60.0 %

5/9 for 55.6 %

Turnovers

2nd Chances

Field Goals

Free Throws

Lead Changes: 3 Ties: 3

Lead Changes: 0 Ties: 0 (this period)

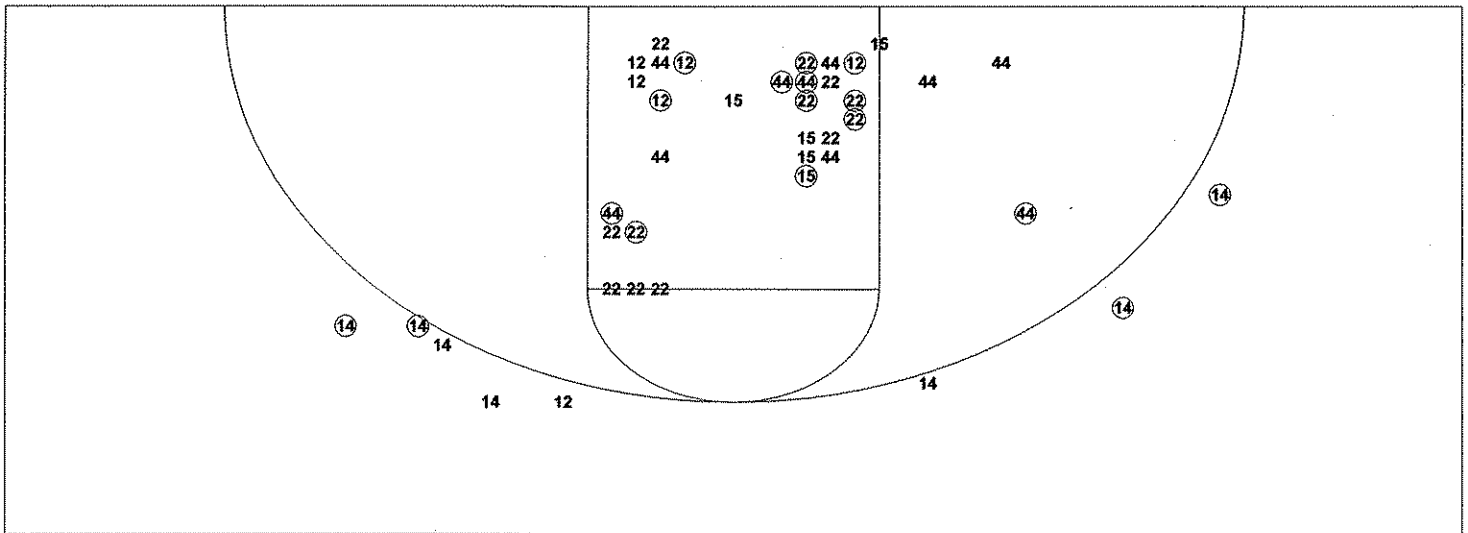
5 for 4 oppo pts

4 for 2 pts

6/14 for 42.9 %

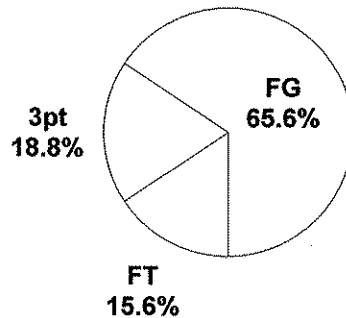
3/5 for 60.0 %

2005 HOUCHEMS INDUSTRIES/KHSAA GIRLS' SWEET 16 - TEAM SHOT CHART for the Henderson County Lady Colonels
 Henderson County Lady Colonels vs. Scott County Lady Cardinals
 DATE: 03/23/2005 TIME: 2:30 pm CST SITE: Diddle Arena-Bowling Green, KY

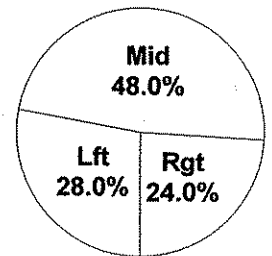


Shot Summary	M/A	%	PTS
3Pt FG	4/8	50.0%	12
2Pt FG	21/49	42.9%	42
Layups - L	5/6	83.3%	10
Layups - R	3/9	33.3%	6
Dunks	0/0	0.0%	0
Putbacks	0/2	0.0%	0
Overall Shooting	25/57	43.9%	54
Free Throws	10/20	50.0%	10
Total Points			64

Scoring Distribution

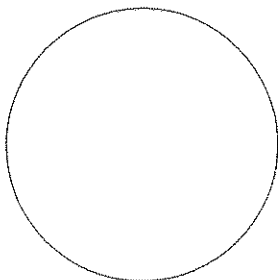


Scoring Locations

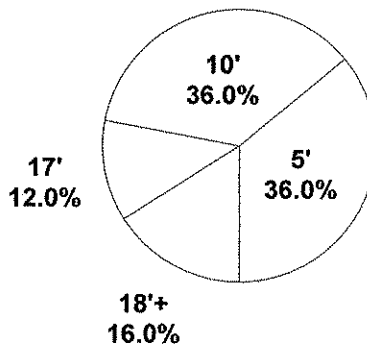


By Period	FG	FGA	FG%	3Pt	3PA	3P%	FT	FTA	FT%	PTS	ORB	DRB	TR	PF	AST	TO	BS	ST	P/S
1st Period	8	15	53.3	2	2	100	0	0	0.00	18	0	5	5	2	4	7	2	3	1.20
2nd Period	3	17	17.6	1	3	33.3	1	4	25.0	8	3	4	7	1	3	4	0	2	0.42
3rd Period	8	15	53.3	1	3	33.3	4	7	57.1	21	1	6	7	3	4	2	1	1	1.17
4th Period	6	10	60.0	0	0	0.00	5	9	55.6	17	1	5	6	5	1	4	1	2	1.21
Game	25	57	43.9	4	8	50.0	10	20	50.0	64	5	20	25	11	12	17	4	8	0.96

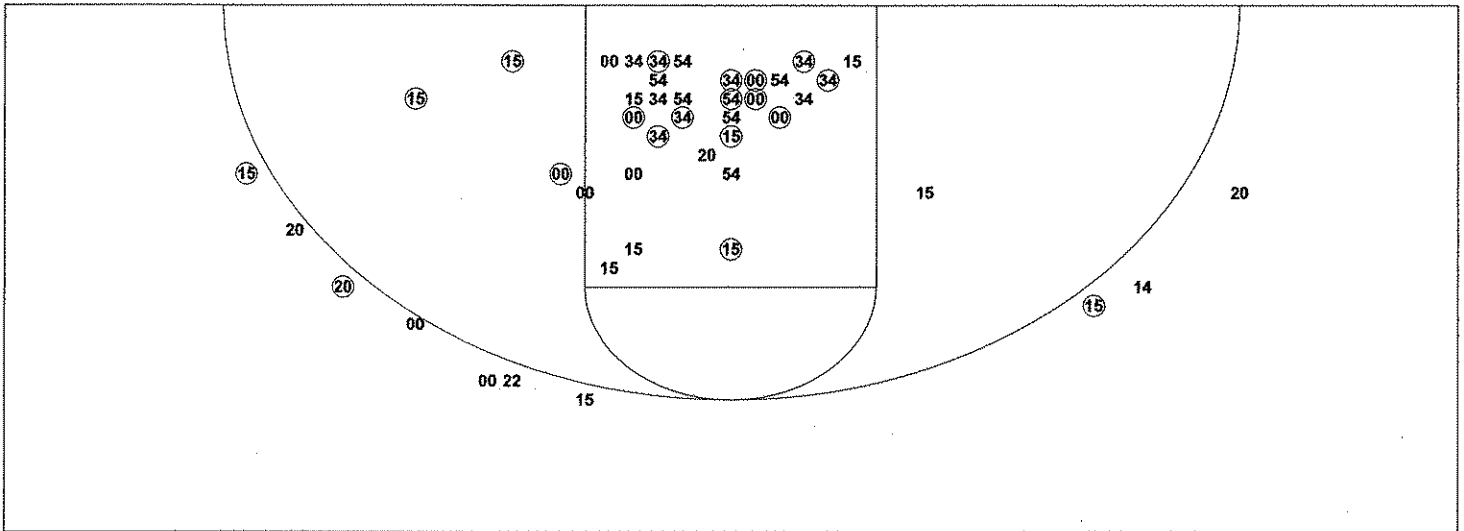
Scoring Breakdown



Scoring Range

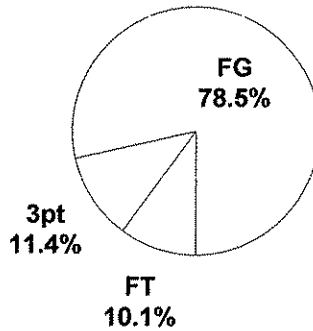


2005 HOUCHEM INDUSTRIES/KHSAA GIRLS' SWEET 16 - TEAM SHOT CHART for the Scott County Lady Cardinals
 Henderson County Lady Colonels vs. Scott County Lady Cardinals
 DATE: 03/23/2005 TIME: 2:30 pm CST SITE: Diddle Arena-Bowling Green, KY

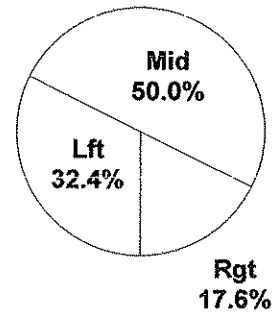


Shot Summary	M/A	%	PTS
3Pt FG	3/10	30.0%	9
2Pt FG	31/56	55.4%	62
Layups - L	6/7	85.7%	12
Layups - R	5/6	83.3%	10
Dunks	0/0	0.0%	0
Putbacks	4/9	44.4%	8
Overall Shooting	34/66	51.5%	71
Free Throws	8/15	53.3%	8
Total Points			79

Scoring Distribution

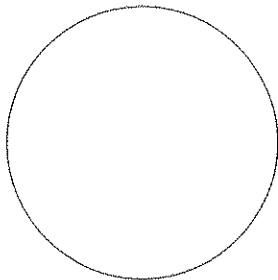


Scoring Locations



By Period	FG	FGA	FG%	3Pt	3PA	3P%	FT	FTA	FT%	PTS	ORB	DRB	TR	PF	AST	TO	BS	ST	P/S
1st Period	11	23	47.8	0	1	0.00	2	4	50.0	24	7	7	14	1	2	6	0	7	0.96
2nd Period	7	12	58.3	2	3	66.7	2	2	100	18	1	13	14	4	3	6	3	2	1.38
3rd Period	10	17	58.8	1	3	33.3	1	4	25.0	22	3	8	11	5	3	3	1	0	1.16
4th Period	6	14	42.9	0	3	0.00	3	5	60.0	15	4	5	9	6	3	5	0	2	0.94
Game	34	66	51.5	3	10	30.0	8	15	53.3	79	15	33	48	16	11	20	4	11	1.08

Scoring Breakdown



Scoring Range

